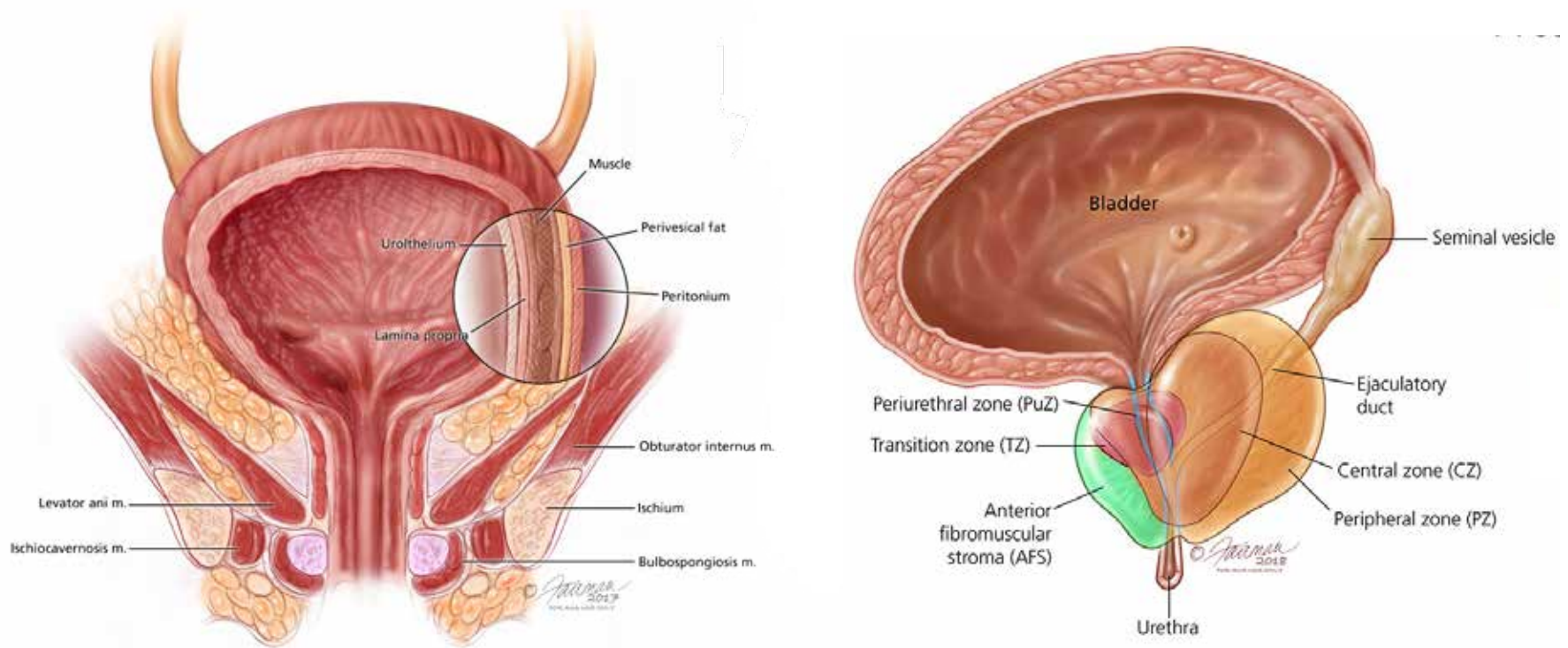


How Does the Bladder Work?

The bladder is a hollow, balloon-shaped organ. It is mostly made of muscle. It stores urine until you are ready to go to the bathroom to release it. The bladder helps you urinate. Urine then leaves the body through the urethra.

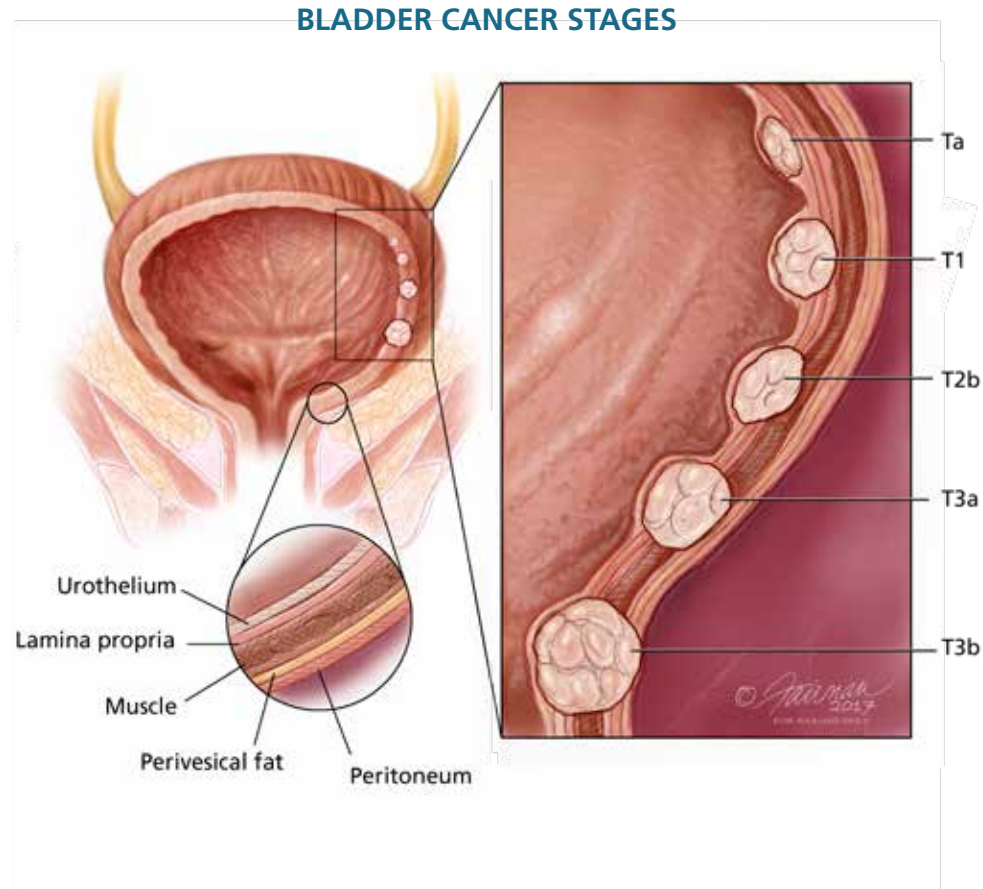
BLADDER OVERVIEW



Notes:

What is bladder cancer?

When cells of the bladder grow abnormally, they can become bladder cancer. A person with bladder cancer will have one or more tumors in the bladder. Most bladder cancers start in the inside lining of the bladder. There are two basic types of bladder cancer: non-muscle invasive bladder cancer (NMIBC) and muscle-invasive bladder cancer (MIBC).



Notes:
